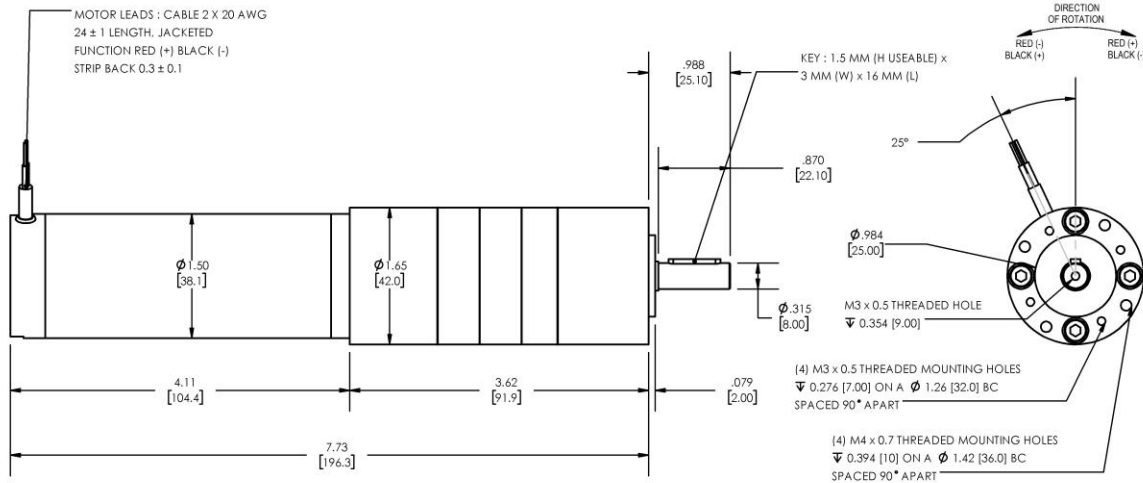


**Model Number:**  
**MMP S17-400B-12V GP42-068**



DIMENSIONS ARE INCHES [MM] UNLESS OTHERWISE STATED

PLANETARY GEARMOTOR OUTPUT PARAMETERS:	VALUE	UNITS	TOLERANCE
Gearhead Ratio (exact)	68.06 : 1		
Gearmotor Output Speed (at Cont. Torque)	60	RPM	+/- 15%
Gearmotor Rated Continuous Torque	19	In-Lbs	MAX
Gearmotor Peak Torque Capacity	<b>148++</b>	In-Lbs	MAX
Gearhead Standard Backlash	60	Arc Minutes	MAX
Gearhead Efficiency	70%	----	----
Output Shaft Radial Load Capacity	68	Lbs	MAX
Output Shaft Axial Load Capacity	25	Lbs	MAX
Gearmotor Total Weight	2.7	Lbs	MAX

**++ All Peak Torque values are dependent upon duty. Contact our sales office for details.**

DC MOTOR PERFORMANCE PARAMETERS:	VALUE	UNITS	TOLERANCE
Input DC Voltage	12	DC VOLTS	----
No-Load Current	0.70	AMPERES	MAX
No-Load Speed	4247	RPM	+/- 15%
Rated Continuous Torque	6.4	OZ-IN	MAX
Rated Continuous Current	2.4	AMPERES	MAX
Rated Speed (at Cont. Torque)	4101	RPM	+/- 15%
Rated Continuous Power Out	19	WATTS	+/- 15%
Peak Motor Torque	50	OZ-IN	MAX
Peak Motor Current	14.0	AMPERES	MAX
Back EMF Constant (Ke)	2.8	V/KRPM	+/- 10%
Torque Constant (Kt)	3.7	OZ-IN/AMP	+/- 10%
DC Armature Resistance	0.40	OHMS	+/- 15%
Armature Inductance	0.11	mH	+/- 15%
Number of Motor Poles	4	(-)	----
Armature temperature	155	DEG. C	MAX

NOTES:

1. Rated speeds may drop as the motor temperature increases. Values are stated with the motor at 25 °C.
2. All Peak Torque values are dependent upon duty. Contact our sales office for details.

ENCODER & BRAKE OPTIONS AVAILABLE – [FOLLOW THIS LINK FOR DETAILS](#)

NEMA MOUNTING FLANGE OPTION AVAILABLE – [FOLLOW THIS LINK FOR DETAILS](#)